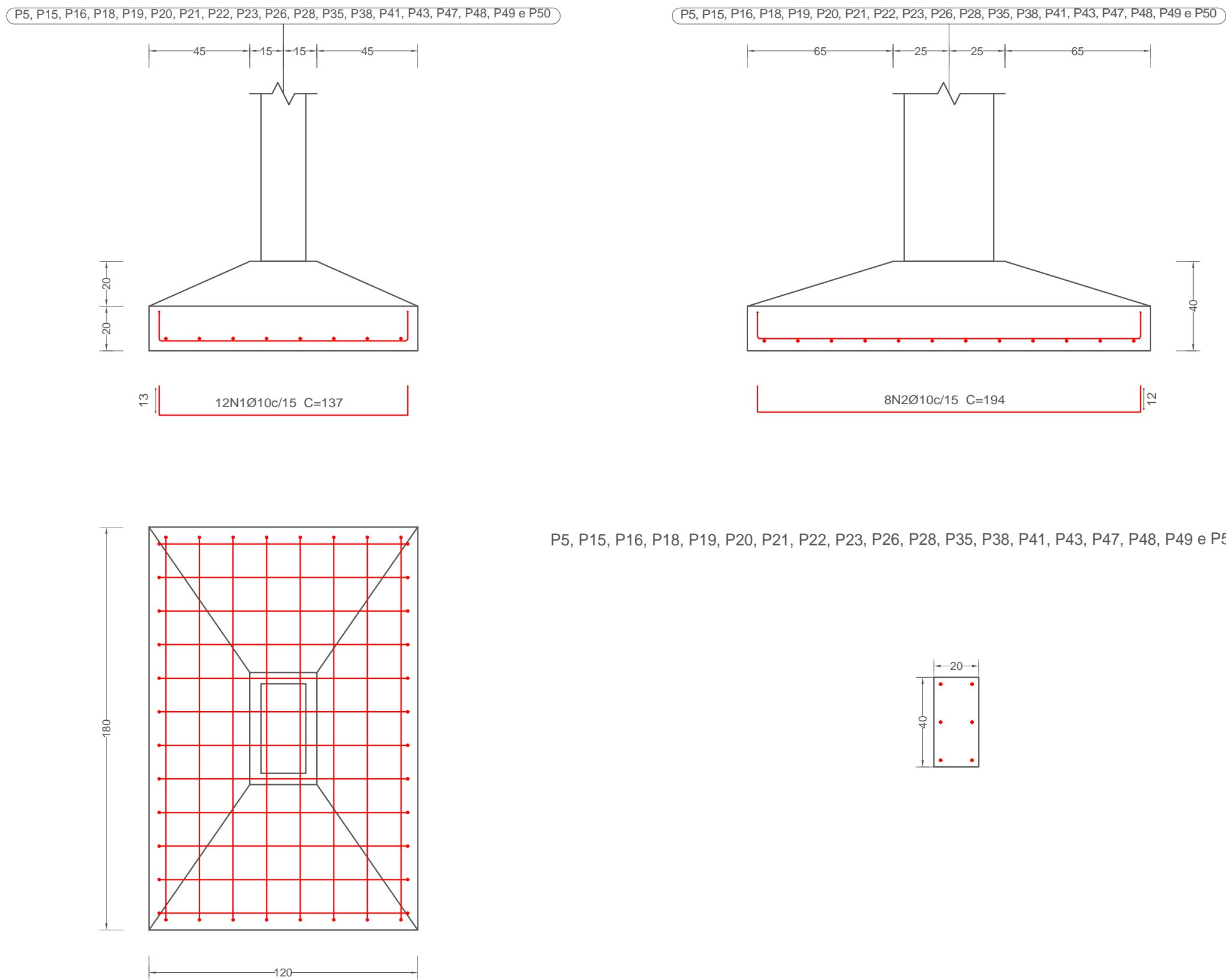


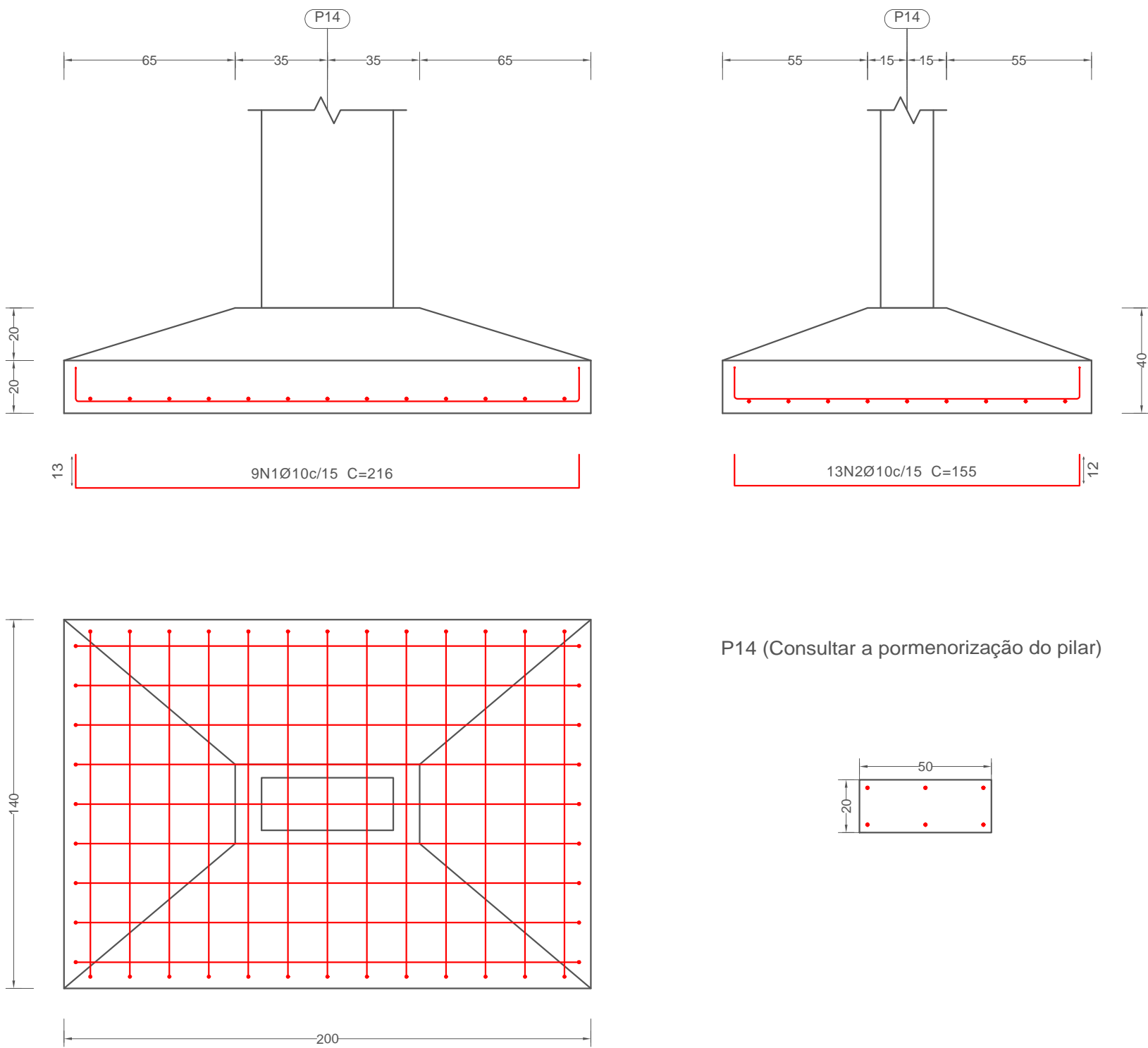
# FUNDAÇÃO

P5, P15, P16, P18, P19, P20, P21, P22, P23, P26, P28, P35, P38, P41, P43, P47, P48, P49 e P50

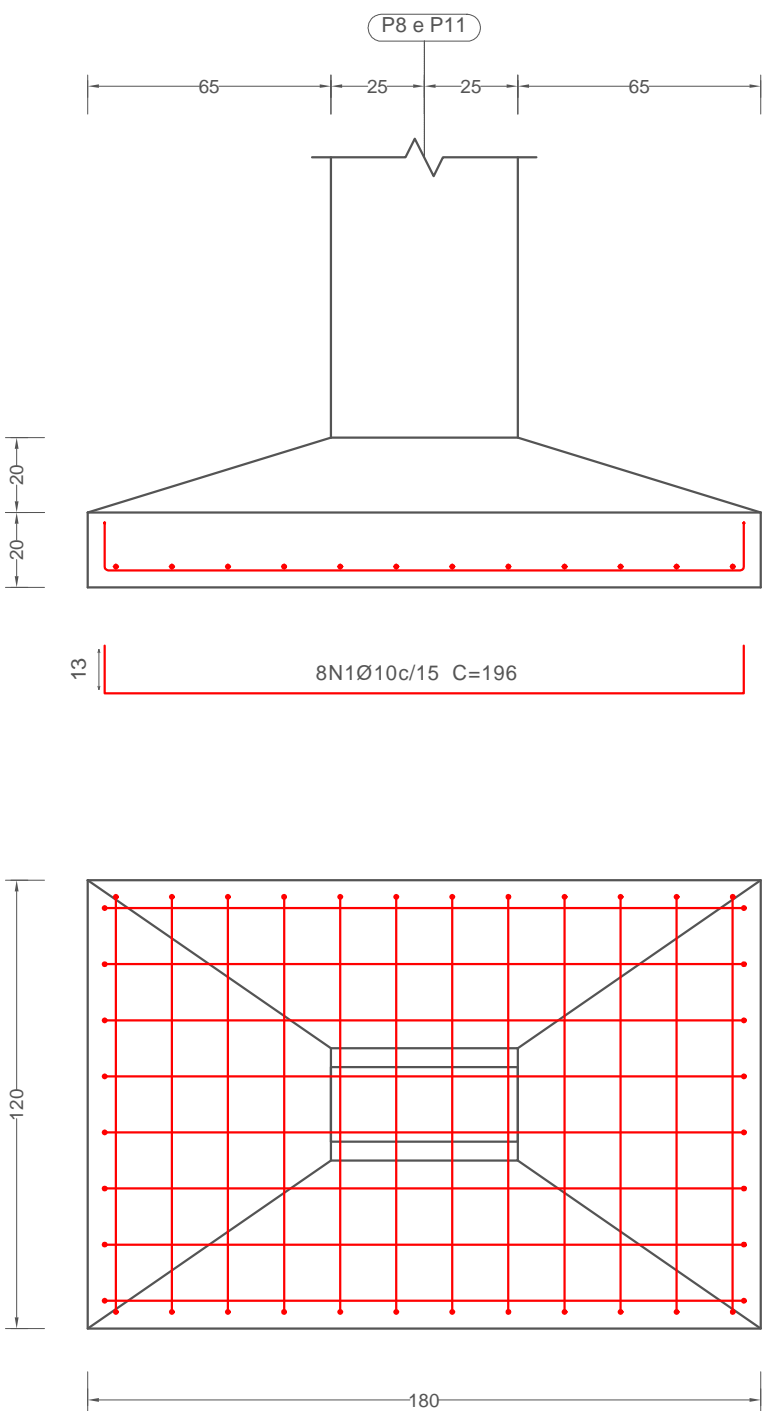


P5, P15, P16, P18, P19, P20, P21, P22, P23, P26, P28, P35, P38, P41, P43, P47, P48, P49 e P50

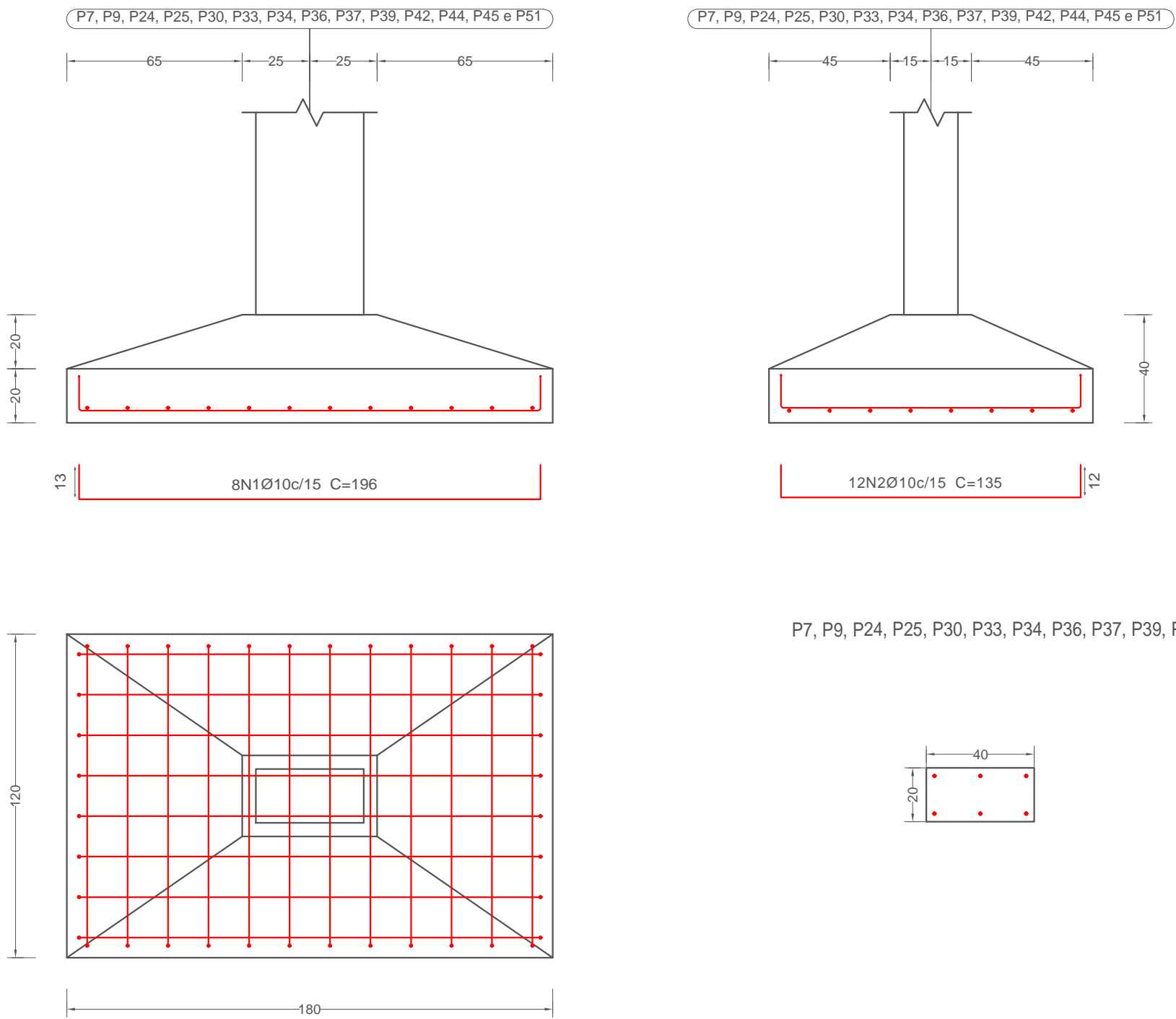
P14



P8 e P11

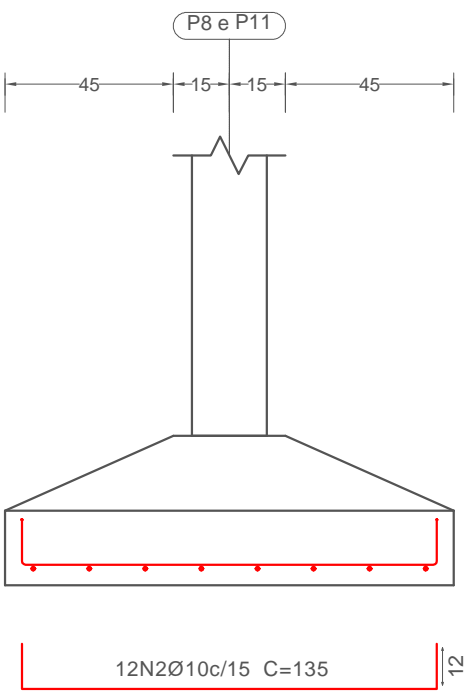
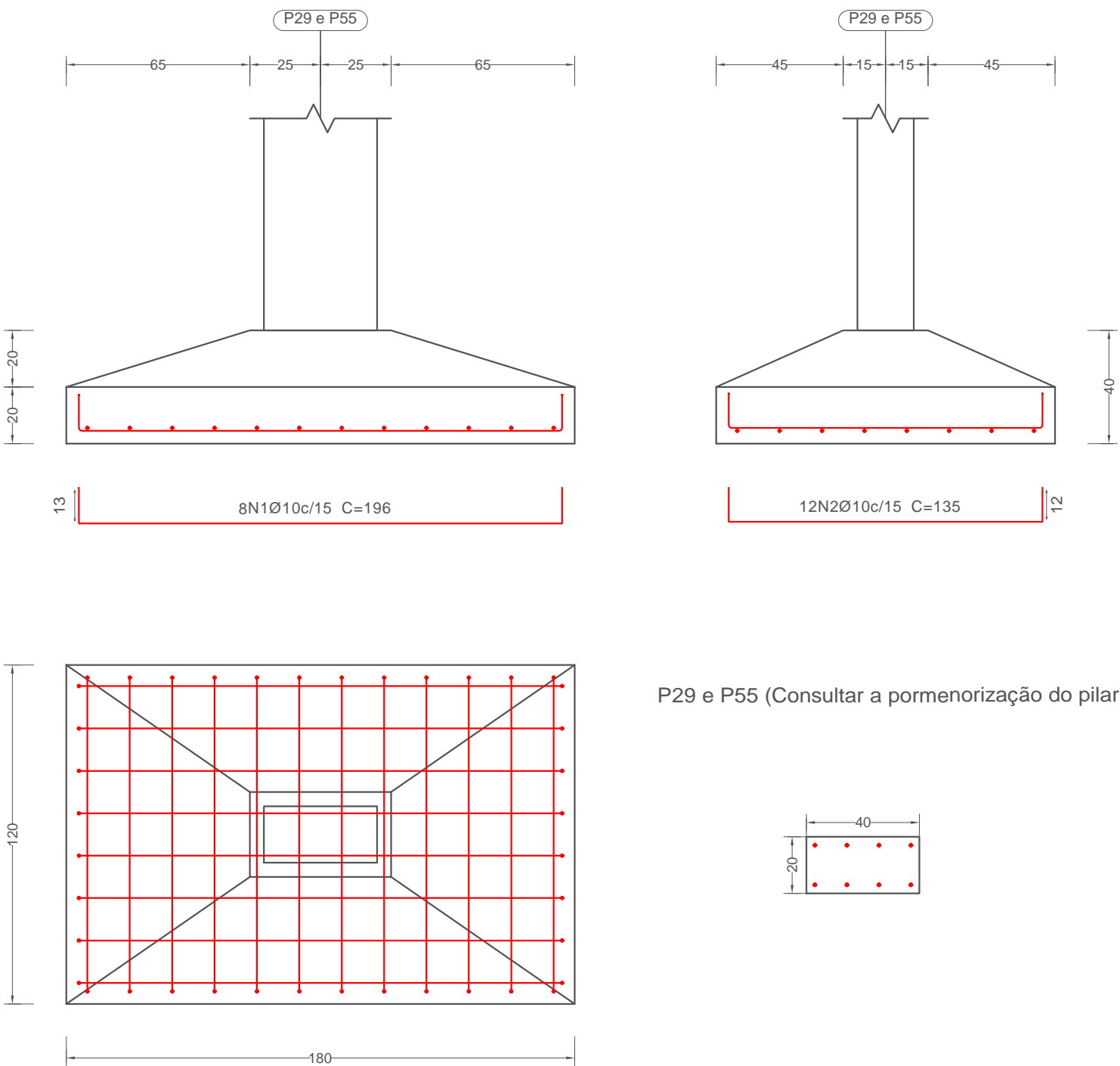


P7, P9, P24, P25, P30, P33, P34, P36, P37, P39, P42, P44, P45 e P51

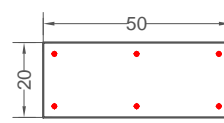


P7, P9, P24, P25, P30, P33, P34, P36, P37, P39, P42, P44, P45 e P51

P29 e P55



P8 e P11 (Consultar a pormenorização do pilar)



## NOTAS

- A EXECUÇÃO DO ESCORAMENTO, DO RE-ESCORAMENTO E DO CIMBRAMENTO DEVE RESPEITAR A NBR 15696.
- RETIRAR ESCORAMENTO APÓS 28 DIAS DA CONCRETAGEM
- QUALQUER MODIFICAÇÃO OU DÚVIDA NO PROJETO DEVERÁ SER IMEDIATAMENTE INFORMADA AO PROJETISTA ESTRUTURAL

## COBRIMENTOS MÍNIMOS

LAJE E ESCADA: 2,5cm  
PILAR: 2,5cm  
PILAR (CONTATO COM O SOLO): 2,5cm

SAPATA: 4cm  
VIGA: 2,5cm

CONCRETO  
fck = 30 MPa  
AÇO: CA-50 E CA-60



PREFEITURA MUNICIPAL  
SANTO ANTÔNIO DE LEVERGER

**FUNDAÇÃO**  
P5, P15, P16, P18, P19, P20, P21, P22, P23, P26, P28, P35, P38, P41, P43, P47, P48, P49, P50, P7, P9, P24, P25, P30, P33, P34, P36, P37, P39, P42, P44, P45, P51, P29, P55, P14 P8 e P11

03

03 - 31

RESP. TÉCNICO  
Maycon Henrique Moraes Rodrigues  
CREA - MT: 51648

PROPRIETÁRIO  
Prefeitura Municipal de Santo Antônio de Leverger  
CNPJ: 03.507.555/0001-12